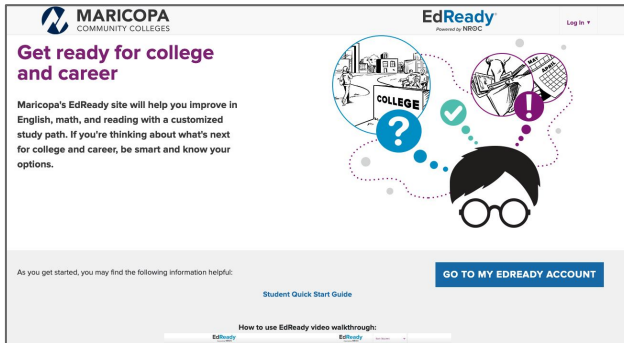
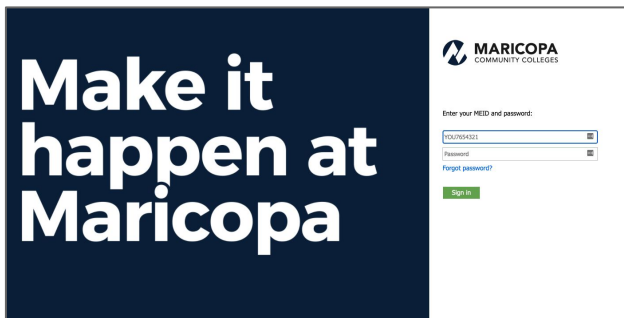


EdReady Quick Start Guide for Students

Logging into EdReady



1. Navigate to maricopa.edready.org
2. Click the **GO TO MY EDREADY ACCOUNT** link

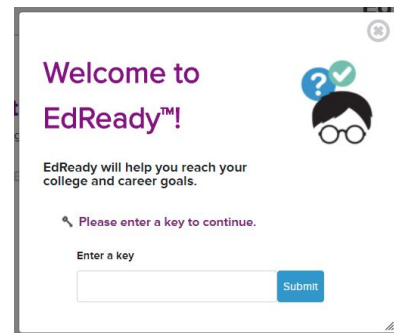


2. Enter your MEID and password, then click the **Sign In** button

Note: If you forget your password, click the **Forgot Password?** link.

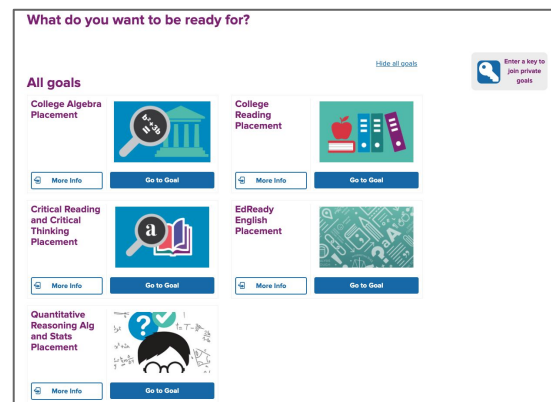
Goals & your Student Dashboard

The first time you log into EdReady, you'll see a pop-up window like this. If you are going to complete one of the placement pathways, you do not need to enter a goal key. Simply click the 'x' in the top right-hand corner to close this window. To begin working in one of the placement pathways, click **Go to Goal** for that pathway. After joining one goal, the other placement goals will disappear. To view them, simply click **Show All Goals**.



If you are not using any of the placement pathways, and you have been given a goal key by an instructor, enter it in the textbox and click the **Submit** button. The textbox will be replaced with the name of the goal you entered.

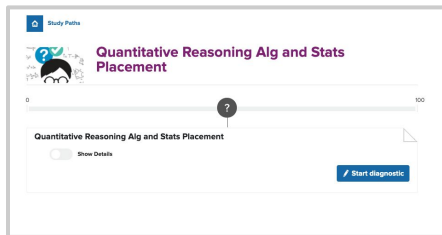
If you ever need to enter a key at another time, just click the **Enter a key to join private goals** button at any time.



For more information about placement through EdReady visit: <https://www.maricopa.edu/future-students/assessment-placement/edready>

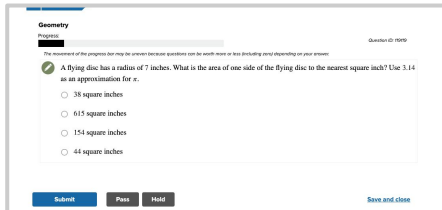
EdReady Quick Start Guide for Students

Working on your Goals in EdReady



From your dashboard, click **Go to Goal** to work on that goal. Click on the **Start diagnostic** button to begin building your personalized study path.

You will see a series of questions where you will be tested on your knowledge.



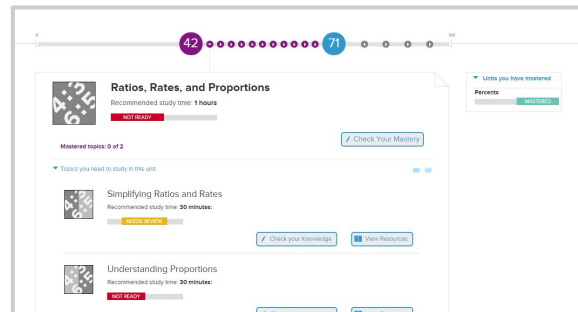
Don't worry if you don't know something – if you don't know the answer to a question, just use the **Pass** button to skip the question. You can also click **Hold** to save the question and answer it later.

If you need to leave the test before you finish, click the **Save and close** link – you'll be able to finish this test at another time.

After you finish the initial test, you'll see a score show up on the scorebar, inside a purple circle. As you work in EdReady, your score will change to reflect your improved knowledge!

Once available, click the **View Study Path** button to see and work on the material you still need to work on. After you take the initial test, this is what you'll do to keep working in EdReady.

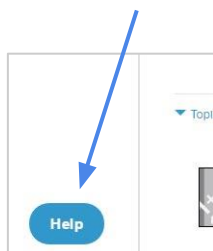
You can **Learn** any topic, allowing you to access online courses directly from EdReady. Once you're ready, **Test** your knowledge to see, letting you test what you have learned and Master material. Your performance on these Tests will update your EdReady score and your current status for the tested material.



Want more details about your Study Path & working in EdReady? Visit the User Guide at <http://support.edready.org>

Need Help using EdReady?

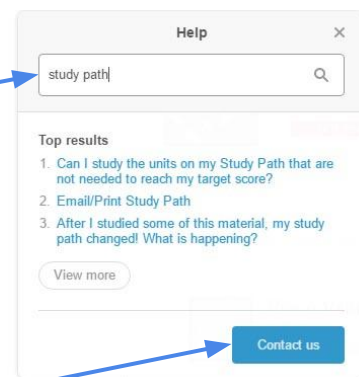
If you need any help using EdReady, you can always click the **Help** button that shows up on the left-hand side of every page.



In the window that opens, enter some text about what you need help with, then click the **magnifying glass** button to search.

You will see some articles in our Help Center that may be able to help you.

Not seeing what you need? Click the **Contact Us** button – this will allow you to submit a ticket directly to the EdReady technical support team.



For more information about placement through EdReady visit: <https://www.maricopa.edu/future-students/assessment-placement/edready>